

# Orland Future Land Use

## Map Legend

### Growth Areas

-  Historic Village & Waterfront
-  Leeches' Point
-  State Route 15/Interior


### Environmental/Shoreland

-  Limited Residential
-  Resource Protection
-  Limited Commercial
-  Limited Residential - Wetland Etc.
-  Resource Protection - Wetland Etc.

### Orland Land Uses

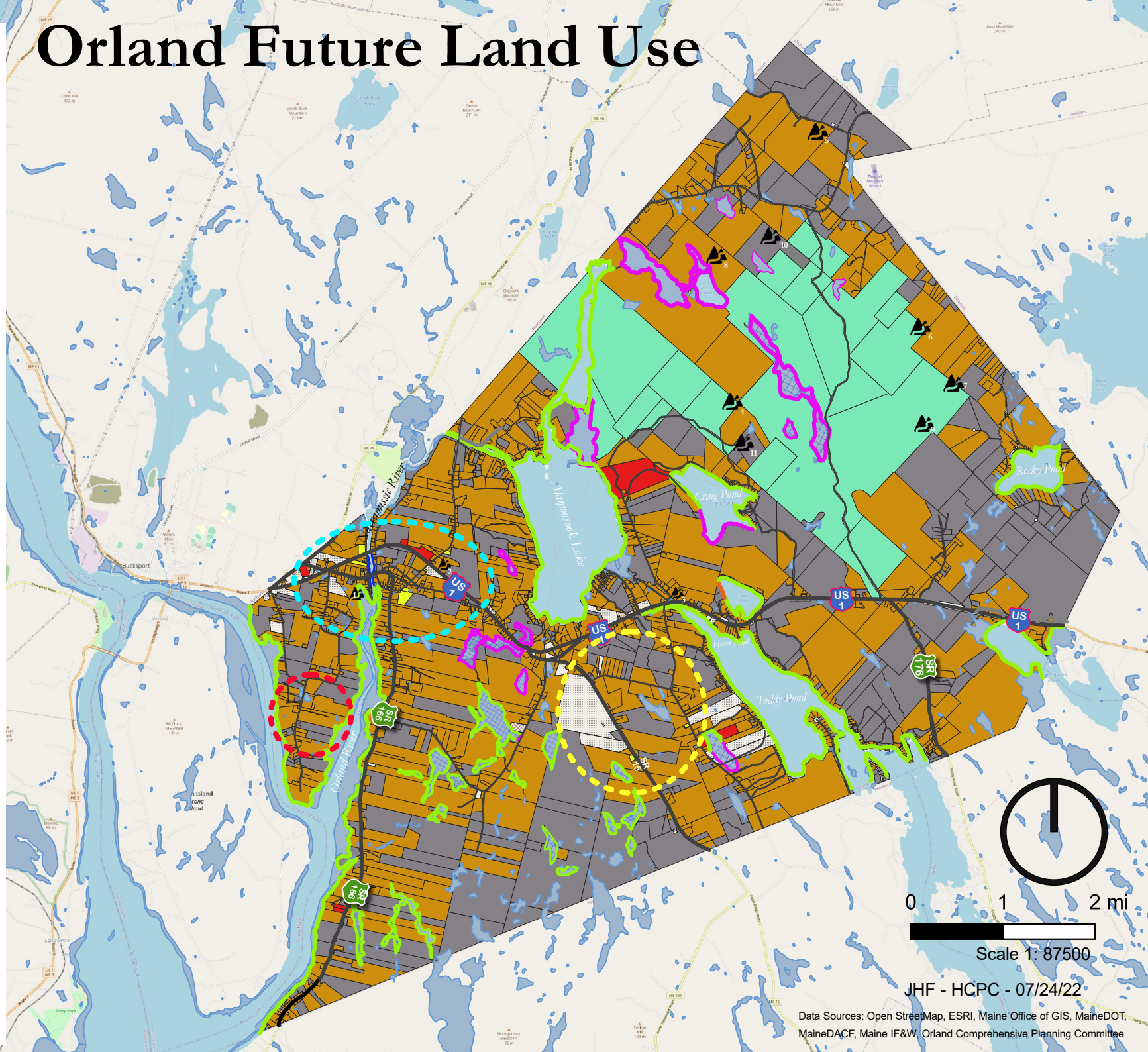
-  Commercial
-  Conservation
-  Industrial
-  Institutional
-  Park
-  Residential
-  Utility
-  Vacant
-  Wetlands

### Other Land Uses

-  Scenic Views\*
-  Roads

#### Scenic Views:

- |   |                  |
|---|------------------|
| 1. Orland United Methodist Church from Rt. 1, | 8. Hothole Mt.,  |
| 2. Blueberry Fields, Goat Hill,               | 9. Oak Hill,     |
| 3. View of Toddy Pond from Rt. 1,             | 10. Condon Hill, |
| 4. Great Pond Mountain,                       | 11. Mead Mt.     |
| 5. Dodge & White Hill,                        |                  |
| 6. Flying Moose Mt.,                          |                  |
| 7. Flag Hill,                                 |                  |



Scale 1: 87500

JHF - HCPC - 07/24/22

Data Sources: Open StreetMap, ESRI, Maine Office of GIS, MaineDOT, MaineDACF, Maine IF&W, Orland Comprehensive Planning Committee